



The Gatineau River Yacht Club

Invitational Regatta 2011

Chelsea, Québec



# Sailing Instructions

## 1. Rules

- a. The regatta shall be governed by the International Sailing Federation, the prescriptions of the Canadian Yachting Association, the class rules of the participating yachts, and the present sailing instructions. **The Racing Rules of Sailing for 2009-2012 will be followed.**
- b. Contrary to class rules, sail numbers do not have to match the hull numbers. Numbers will be accepted as long as they can be clearly identified.

## 2. Entries

- a. Participants may enter by completing the registration with the organizing authority and paying the applicable fee.

## 3. Notice to Competitors

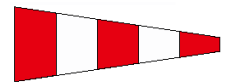
- a. Notices to competitors will be posted on the notice board located on the main stairs inside the clubhouse.
- b. Preliminary results for day one will be posted there as soon as they are available.

## 4. Changes to instructions

- a. Any changes to the sailing instructions or schedule of races will be posted before 09h00 on the day they take effect.

## 5. Signals made ashore

- a. Signals made ashore will be displayed at the mast at the light house.
- b. Code flag AP, Answering Pennant (Red-White-Red-White-Red), with two horns (one horn when lowered) means: ***The race is postponed.*** The warning signal will be made not less than 15 minutes after AP is lowered.



## 6. Class Flags

- a. The Class flags will be identified at the skippers meeting.

## 7. Schedule

- a. A Skippers meeting will be held prior to the first race (09h00)
- b. The timetable is as follows:

Day 1 – Saturday	Day 2 – Sunday
Races 1&2 09h30	Races: 09h30 onwards
Races 3+ 14h00	

**Any course or schedule changes for the afternoon will be announced at lunch.**

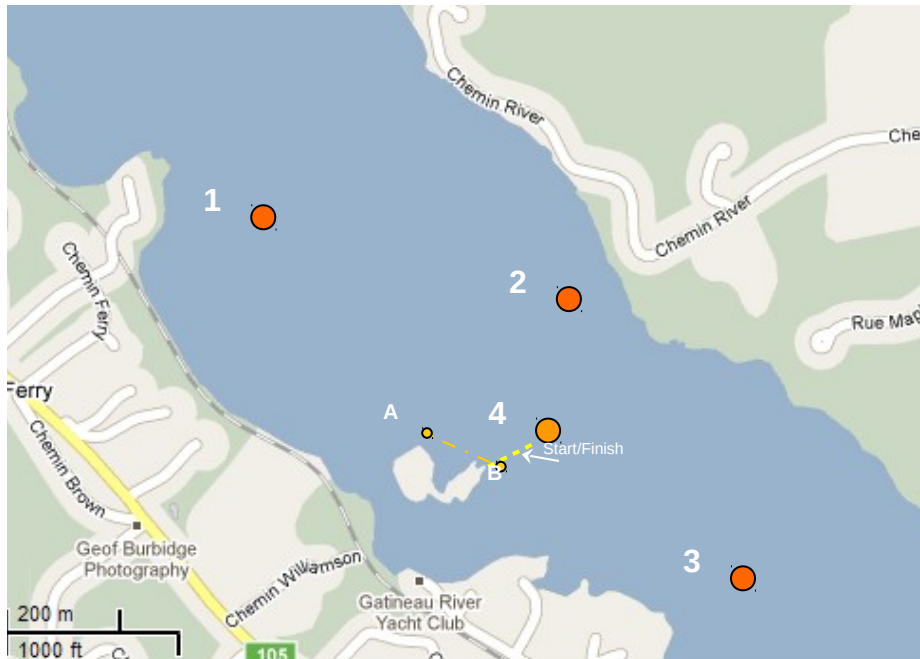
- c. On the last day of the regatta no warning signal will be made after 2:00 pm

## 8. Racing Area

- a. The racing area will be on the river in front of the Island.

### WARNINGS:

- b. A shallow reef extends off the lighthouse point where the race committee signals are displayed. A small orange float marks the safe water boundary. Boats must remain outside of this area.
- c. A shallow reef extends off the rocky point at the northern tip of the Island. A small orange float marks the safe water boundary. Boats must remain outside of this area.
- d. A shallow bay exists between the lighthouse point (B) and the rocky point (A) at the northern tip of the Island. Boats must remain outside of the area bounded by the lighthouse point reef marker, the northern rocky point reef marker and the shore of the Island.



## 9. The course

- a. The course to be sailed will be chosen from the following and announced at the skippers meeting and at lunch (See attached diagrams at Appendix A)
  - i. Two large triangles.
  - ii. A small triangle and a large triangle.
- b. The angles between marks will depend on the prevailing wind direction.
- c. Courses will not be shortened to less than 4 legs.
- d. Small orange markers along the shore of the island mark the shoreline. See Racing Area – as above Section # 8. This line is considered an obstruction as per RRS rules 18 and 19.

## 10. Marks

- a. The marks will be large, bright orange balloons. The start and finish limit mark will be a medium-sized bright orange buoy.

## 11. The start

- a. Races will be started in accordance with ISAF Rule 26

Races shall be started by using the following signals.

Times shall be taken at the skippers brief.

Signal	Visual signal	Sound signal	Time (minutes)
Warning	Class Flag Up	One horn	5
Preparatory	Prep Flag Up	One horn	4
Warning	Prep Flag Down	One horn	1
Start	Class Flag Down	One long horn	0

*Note* The Executive Signal is the visual flag signal and the sound signal draws attention to the flag signal. Therefore any failure of sound signal shall be disregarded.

- b. The start and finish line will be between the mast at the south point lighthouse of the island and the medium bright orange mark (4) on the river (see diagram above).

**Note:** The start and finish line **do not** include the south point reef marker.

- c. Yachts in subsequent starts shall keep clear of the starting area and all yachts whose preparatory signal has been made.
- d. A yacht shall not start later than 10 minutes after her starting signal.

## 12. Recalls

- a. Individual recalls will be signalled with flag and horn in accordance with RRS rule 29.2. and delinquent sail numbers announced over the loud hailer.
- b. A general recall will be implemented whenever three or more boats are over the line at the start. When a general recall has been signalled, the Class concerned goes to the end of the start sequence i.e. the 5 minute starting sequence of the recalled Class will begin again at the start signal of the last Class in the overall starting sequence. If a subsequent general recall is issued, or in the case of a Class that is at the end of the overall starting sequence, the 5 minute starting sequence will begin 1 minute after the recall is signalled.
- c. At the discretion of the Race Committee (RC), if a Class has more than two (2) general recalls in succession, the RC may elect to institute a DSQ for any boats over the line early in the subsequent start.

## 13. Change of course

- a. When changing the course after the start, the race committee may move an original mark of the course. Any mark to be rounded after rounding the moved mark may be relocated to maintain the original course configuration.
- b. A change of course will be signalled near the mark beginning the leg being changed by a race committee boat that will display code flag C (Blue-White-Red-White-Blue) and make a periodic signal. The change will be signalled before the leading yacht has begun the leg, and the new mark will be in position.



## 14. The finish

- a. The start and finish line will be between the mast displaying the GRYC Pennant flag at the south point lighthouse mast and the medium bright orange limit mark laying on the river.

**Note:** The start and finish line **do not** include the south point reef marker.

### **15. Abandonment**

- a. Any race in which no yacht finishes within 60 minutes will be abandoned. Yachts finishing more than 30 minutes after the first yacht finished or after the time limit, whichever is later, will be scored *DNF (Did Not Finish)*.
- b. Any race which the Race Committee judges not to be a fair test of sailing skill may be abandoned.

### **16. Protests**

- a. Protesters not flying a protest flag at the earliest opportunity following the incident and for the complete duration of the race will not be eligible to protest.
- b. Protest forms are available in the Race Office. They must be handed in to the Manager, Race or Protest Committee within 1 hour after the time the last yacht finishes.
- c. The jury will hear protests in the approximate order of receipt as soon as possible.
- d. At the end of the protest period the jury may assign times for hearings, in which case they will wait no longer than 5 minutes before starting the hearing in the absence of the protester and/or the protestee.

### **17. Scoring**

- a. The series will be scored as provided in Appendix A of the RRS using the Low Point Scoring System.
- b. If 5 or fewer races are run, all scores will be counted towards a competitors result. If 6 races are run, a competitor's worst score will be discarded. If 7 or more races are run, a competitor's two worst scores will be discarded.
- c. A DSQ (Disqualification) cannot be discarded.
- d. A boat that did not start, did not finish, retired after finishing or was disqualified shall be scored points for the finishing place one more than the number of boats entered in that Class for the overall Regatta series.
- e. Points are scored by the skippers - not the boats - and skippers are not allowed to change boats without due cause and prior approval by the race committee

### **18. Safety**

- a. Lifejackets shall be worn at all times while racing. A boat shall be disqualified for failing to comply with this rule.
- b. When leaving the racing area early, a competitor shall attempt to notify the Race Committee or an official on shore immediately on arrival.

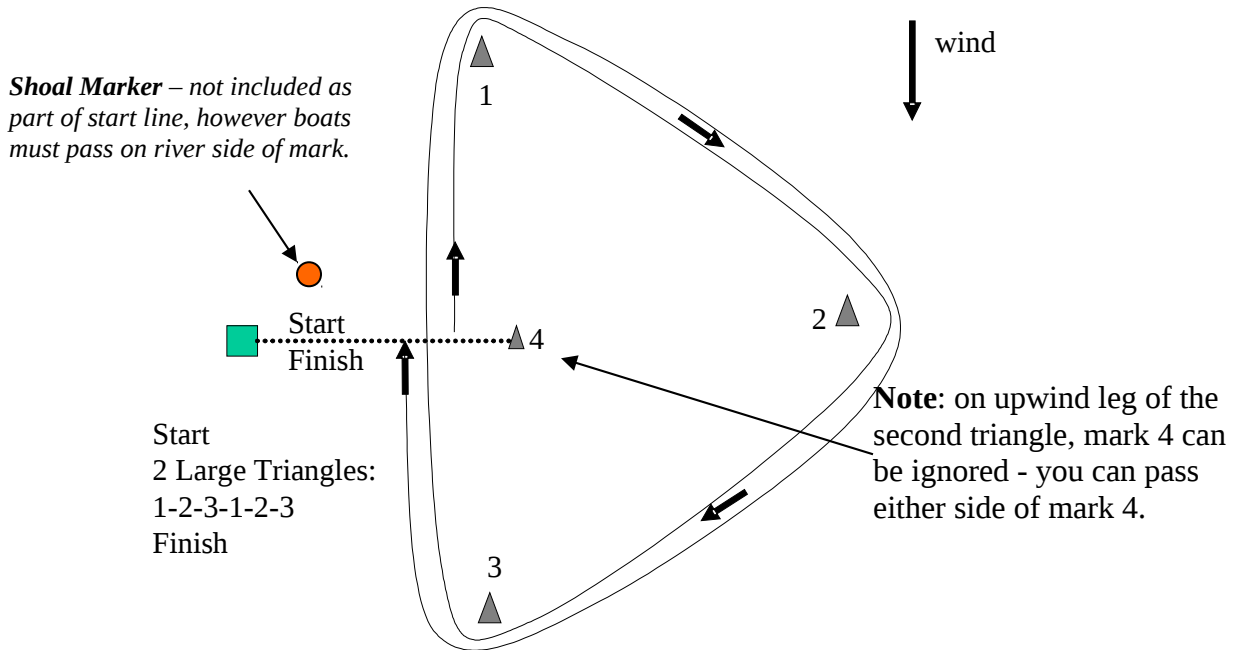
**19. Trash Disposal** Boats shall not put trash in the water. Trash may be placed aboard support and race committee boats.

**20. Awards** Final Results and Awards will be presented after Lunch on Sunday.

**21. Disclaimer of Liability** Competitors participate in the regatta entirely at their own risk. See rule 4, Decision to Race. The organizing authority will not accept any liability for material damage or personal injury or death sustained in conjunction with or prior to, during, or after the regatta.

**Courses:** Each race will follow one of the following courses, depending on wind strength and direction. It is the responsibility of competitors to make themselves aware of the course to be run by attending the skippers meetings. Marks are left to starboard. Note that if the wind direction is from downriver (South East), the race will be a mirror image of the diagrams below and marks will be left to Port.

“Two Large Triangles”



“Small Triangle, Large Triangle”

